



# Garden News Update



Christmas Festival Edition



Issue 19, November 24th 2011

## Pugh's Christmas Festival 2011

Join us at Pugh's Garden Village next weekend — on Saturday 3<sup>rd</sup> and Sunday 4<sup>th</sup> December — to help us celebrate our second annual Christmas Festival.

The festivities will be kick-started at around 10.15am, where six-year-old Ben Thomas will be topping our enchanting Christmas tree with his dazzling home made star, which will be followed by the eagerly-awaited presentation of prizes to the winner and runners up of our local schools colouring competition, whose festive pictures will be on display throughout the Christmas period in The Bay Tree Coffee Shop.

Little ones will also have the chance to meet none other than Peppa Pig, who will be joining us to help celebrate the festivities during this fun-filled weekend.

And Peppa Pig is not our only special guest — we will also be extending a very warm welcome to Simon Weston OBE, who will be signing books from 11am until 1pm on Saturday.

Over in the shrub area, visitors of all ages can enjoy freshly barbecued samples of our finest sausages, gammon, chestnuts and non-alcoholic mulled wine — all of which can be purchased from the Ty Nant Farm Shop.

Our jovial staff will also be wandering around the Garden Village offering samples of scrumptiously festive foods and drinks, while over at the Ty Nant Farm Shop, Jones Organic bakery will be offering samples of their delicious artisan breads, Cacennau Pantycelyn will be inviting you to taste their indulgent cakes, and Elite will be showcasing and sampling their scrumptious pies and pastries.

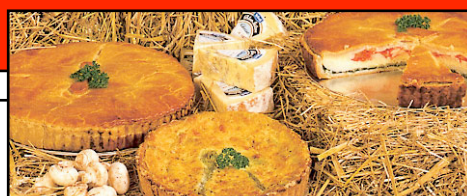
There will also be special tasting session of some of our Farm Shop's festive produce — including the finest cheeses and crackers, handmade chocolates, homemade jams, chutneys and pates, Italian cured meats and flavoured scotch eggs — which will make the perfect additions to your Christmas feast.

Our extra special Christmas hampers will also be available to order throughout the weekend, and we would like to remind you that the last date for ordering our flavoursome locally-sourced poultry and meats in time for your Christmas feast is Sunday 11<sup>th</sup> December 2011.

With so much festive fun to be had for all the family, there really is no other place to be!

As always, we look forward to seeing you soon!

*The Pugh's Team*



## Tree Time!

On Saturday 26<sup>th</sup> November we will be celebrating the official launch of our enchanting fresh Christmas tree area!

Keeping trees both safe and dry (enabling you to transfer your tree straight into your home!) our undercover Christmas tree area will this year house an unbeatable selection of trees!

Nordman Fir non-needle drop trees will be available from a perfectly petite 4'- 5' at just £29.99 to a statement-making 8'- 9' at £99.99.

Our vast variety of Norway Spruce trees range from just £19.99 for 4'-5' varieties to £29.99 for 7'- 8' versions.

We also have a limited stock of Value Nordman Fir trees (5'- 7') at just £29.99!

A selection of beautiful pot grown trees are also available, with prices starting at £34.99 for 60cm - 80cm and £44.99 for 1m - 1.2m.



## Extra Shopping Time At Pugh's!

**Monday 5<sup>th</sup>**  
**Tuesday 6<sup>th</sup>**  
**Wednesday 7<sup>th</sup>**  
**Thursday 8<sup>th</sup>**  
**Monday 12<sup>th</sup>**  
**Tuesday 13<sup>th</sup>**  
**Wednesday 14<sup>th</sup>**  
**Thursday 15<sup>th</sup>**

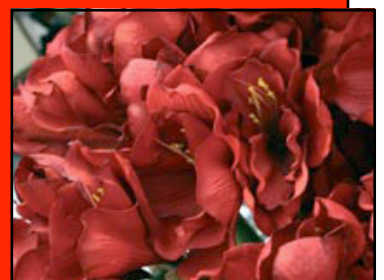
On the above December dates, why not take advantage of our extended opening hours? The Pugh's Garden Village main garden centre (Radyr) will be open until **7pm**, the Ty Nant Farm Shop will open until **6.30pm**, and Edinburgh Woollen Mill will be open until **7pm** — allowing you ample time to browse our festive niceties and stock up on all your Christmas

## Deck The Halls

Our beautifully handcrafted fresh wreaths will be available off the shelf from 10<sup>th</sup> December, but if you are looking for something completely unique, our in-house florist will also be taking bespoke orders for wreaths, table centrepieces and seasonal bouquets.

Our magical Christmas shop also boasts a range of tree stands from just £9.99, along with festive decorations, accessories and lights galore that will allow you to truly transform your home (and garden) into a magnificent winter wonderland this Christmas.

A percentage of proceeds from tree trimmings and nativity displays will also be donated to George Thomas Hospice Care and Velindre Hospital (Pugh's chosen charities for 2011), and any donations welcome.



Find us on Twitter & Facebook!



## Our Famous Selection Of Christmas Trees Is Back!

**Nordman Fir Non-Needle Drop** From £29.99

**Value Nordman Trees 6' — 7'** ONLY £30 while stocks last

**Norway Spruce** From £19.99

**Pot Grown Living Xmas Trees** From £34.99

**Tree Stands** From ONLY £9.99!

**Fresh Holly Wreaths** Available From 10th December

Our **Magical Christmas Shop** is **NOW OPEN**

& Houses All The Inspiration & Accessories

To Perfectly Decorate Your Tree!

*Choose Your Perfect Tree  
From 21st November 2011!*

Pugh's Garden Village Tynant Nurseries  
Radyr Cardiff CF15 8LB  
Tel: 029 2084 2017

Pugh's Garden Village Style Gardens  
Port Road Wenvoe CF5 6AD  
Tel: 029 2059 8118

[www.pughsgardenvillage.com](http://www.pughsgardenvillage.com)



# Choosing & Caring For Your Tree...

Choosing a real Christmas tree is an exciting outing for all the family, and has been a celebrated tradition for over 400 years!

When choosing a tree, check for freshness by grasping a branch. If the tree is fresh, few needles should fall when the branch is pulled towards you

Once you have chosen your perfect tree, keep it in a sheltered area away from wind and sun (such as a porch or garage) until you are ready to decorate it

Before setting up your tree, make a fresh cut across the base of the trunk (about ¼ inch above the original cut) and place in a tree stand that holds water

Your tree will absorb as much as a gallon of water in the first 24 hours, and at least one quart a day thereafter. Watering is essential to prevent the needles dropping and to keep the tree fragrant



**Pugh's Garden Village Tynani Nurseries**  
Radyr Cardiff CF15 8LB  
Tel: 029 2084 2017

**Pugh's Garden Village Style Gardens**  
Port Road Wenvoe CF5 6AD  
Tel: 029 2059 8118

[www.pughsgardenvillage.com](http://www.pughsgardenvillage.com)